

Pressure Gauge

standard - panel mounted

dim 40, 50 and 63 mm

E 02.01.03

ed.17.01

Application	Standard pressure gauge. Suitable for media that will not obstruct the pressure system or attack copper alloy parts. Back mount. Triangular bezel and clamp.
Design	EN 837-1
Type	Serie 2048
WIKA type no	111.12
Case diameter	Dim 40, 50 and 63 mm
Accuracy	Class 2,5%
Case	Black steel case with triangular bezel and clamp
Window	Instrument glass
Pressure element	Copper alloy
Pressure unit	Bar. Option also bar/Pascal, psi or bar/psi
Scale	White plastic scale
Pressure connection	Dim 40 = G 1/8" Dim 50 and 63 = G 1/4"
Mounting	Back mount Triangular bezel with clamp
Pressure limitation	75% of full scale value by steady pressure 66% of full scale value by fluctuating pressure By short time pressure full scale value
Permissible temperature	Medium temperature max -20 till +60°C Ambient temperature max -20 till +60°C
Production options	Accuracy 1,6% Other pressure connections



2048
Back mount
bezel and clamp
case dim 40



2048
Back mount
bezel and clamp
case dim 50



2048
Back mount
bezel and clamp
case dim 63

Pressure Gauge

standard - panel mounted

dim 40, 50 and 63 mm

E 02.01.03

Pressure range	Interval	Divisions
0-0,6 bar	0,02	30
0-1 bar	0,05	20
0-1,6 bar	0,05	32
0-2,5 bar	0,1	25
0-4 bar	0,2	20
0-6 bar	0,2	30
0-10 bar	0,5	20
0-16 bar	0,5	32
0-25 bar	1,0	25
0-40 bar	2,0	20

Pressure range	Interval	Divisions
0-60 bar	2,0	30
0-100 bar	5,0	20
0-160 bar	5,0	32
0-250 bar	10,0	25
0-400 bar	20,0	20
-1/0 bar	0,05	20
-1/+1,5 bar	0,1	25
-1/+3 bar	0,2	20
-1/+5 bar	0,2	30
-1/+9 bar	0,5	20

Accuracy

Max permissible error 2,5%

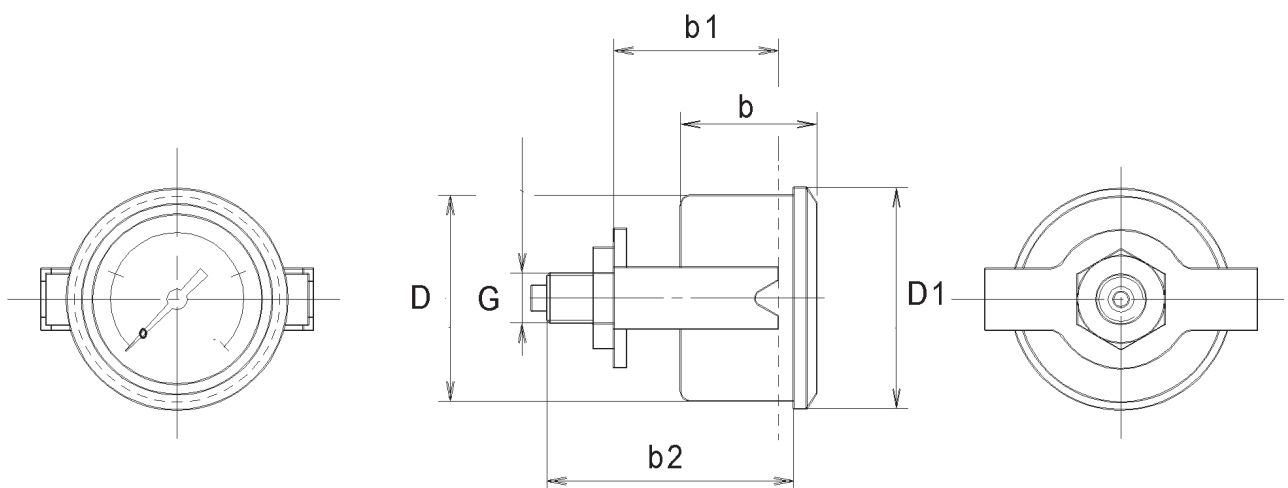
The accuracy is expressed as a percentage of full scale range. Permissible error 2,5% will cover 0% till 100% of scale range with a reference temperature of +20°C.

Ex. Pressure range 0-10 bar has an error of $\pm 0,25$ bar

Temperature effect

Temperature effect

Temperature of the measuring system over or under the reference temperature +20°C will effect the accuracy with 0,4 percentage per +10°C. With a medium temperature of +40°C the accuracy will be $\pm 3,3\%$.



Dim Ø	D	D ₁	b	b ₁	b ₂	G	h	SW	weight
40	39,0	42,9	27,7	32,1	47	G1/8"	-	12	0,1
50	49,0	53,9	29,2	34,7	50	G1/4"	-	14	0,15
63	61,7	66,1	31,2	36,1	52	G1/4"	-	14	0,15

Pressure Gauge

standard - panel mounted

dim 40, 50 and 63 mm

E 02.01.03

Design on stock with dual-scale in bar and Pascal

			
	dim 40 mm	dim 50 mm	dim 63 mm
Connection	G1/8"	G1/4"	G1/4"
0-1 bar/kPa	20480202	20481002	x
0-1,6 bar/kPa	20480203	x	x
0-2,5 bar/kPa	20480204	x	x
0-4 bar/kPa	20480206	x	x
0-6 bar/kPa	20480207	x	x
0-10 bar/MPa	20480208	x	20482008
0-16 bar/MPa	20480211	x	x
0-25 bar/MPa	x	x	20482013
0-40 bar/MPa	x	x	x
0-60 bar/MPa	x	x	x
0-100 bar/MPa	x	x	x
0-160 bar/MPa	x	x	x
0-250 bar/MPa	x	x	x
0-400 bar/MPa	x	x	20482024
-1/0 bar/kPa	20480240	20481040	x

Design with single scale in bar

			
	dim 40 mm	dim 50 mm	dim 63 mm
Connection	G1/8"	G1/4"	G1/4"
0-4 bar	x	20481006	x
0-6 bar	x	20481007	x
0-10 bar	x	20481008	x
0-16 bar	x	20481011	x